

CYLINDRICAL SCREEN



The front line of Elgin's intake screen is welded stainless steel wedge wire, which adds great strength to the structure while providing efficient filtering and smooth flow dynamics. This provides security, knowing the structural integrity of the screen openings will remain consistent for the life of the product.



STRONG



DURABLE

Passive intake screens have no moving parts, allowing for efficient and effective fabrication. This gives the customer confidence that the structure will not wear out over time.

The first priority is accurate filtration. Screen openings must be accurate and stay accurate. Our design team will ensure that your screen will conform to 316B regulations and our materials and fabrication processes will guarantee precision throughout its service life.

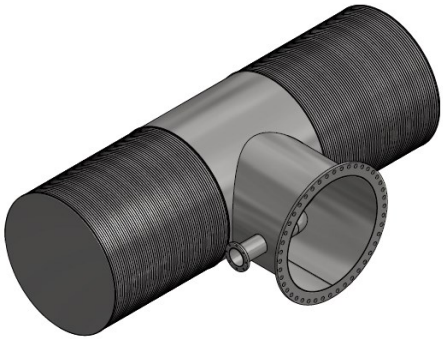


PRECISE



elginwatersolutions.com
614.524.4588
watersolutions@elginps.com

CYLINDRICAL SCREEN



Tee

- Common inlet for two drum screens
- Flange mount



Hemi

- Low water level
- Surface mount



Drum

- Lowest head loss
- Flange mount

TYPE	CAPACITY MGD (LITERS/S)	SCREEN DIAMETER IN (MM)	OVERALL LENGTH IN (MM)	OUTLET DIAMETER IN (MM)
TEE	1.0 (44)	12 (305)	44 (1118)	12 (305)
	2.5 (110)	20 (508)	66 (1676)	20 (508)
	5.0 (219)	30 (762)	76 (1930)	24 (610)
	10 (438)	36 (914)	112 (2845)	30 (762)
	20 (876)	54 (1372)	156 (3962)	48 (1219)
	30 (1314)	60 (1524)	198 (5029)	54 (1372)
	60 (2629)	90 (2286)	276 (7010)	84 (2134)
HEMI	1.0 (44)	18 (457)	56 (1422)	16 (406)
	2.5 (110)	30 (762)	76 (1930)	24 (610)
	5.0 (219)	36 (914)	112 (2845)	30 (762)
	10 (438)	48 (1219)	162 (4115)	42 (1067)
DRUM	1.0 (44)	18 (457)	22 (559)	18 (457)
	2.5 (110)	30 (762)	30 (762)	30 (762)
	5.0 (219)	36 (914)	47 (1194)	36 (914)
	10 (438)	48 (1219)	68 (1727)	48 (1219)

- Screen sizing based on standard screen wedge wire width of 0.090 in (2.29 mm) and 0.125 in (3.18 mm) slot openings (58% open area) and max through slot velocity of 0.5 ft/s (0.15 m/s)
- Additional wedge wire profiles and slot openings available to meet specific requirements
- Outlet sizes and diameter/length combinations can be tailored to each application
- AirBurst inlets shown for reference - size and orientation TBD based on site conditions
- Guide rail mounting options available

