



The front line of Elgin's intake screens is TIG welded wedge wire. The result is a much stronger bond with the wedge wire when compared to resistance welding. This gives the customer peace of mind knowing the screen openings will remain consistent for the life of the product.



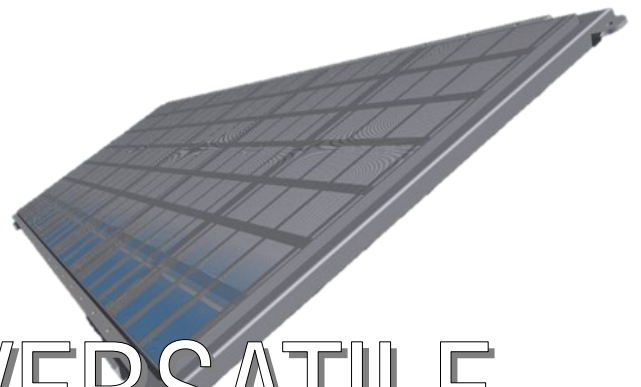
TOUGH



ACCURATE

Conforming to the specification is our first priority. To do this, our screen openings must be accurate and stay accurate. Our design team will ensure that your screen will conform to 316B regulations and our materials and fabrication processes will guarantee your screen conforms throughout its service life.

Flat panel screens can fit into existing openings or can be supplied with guide rails to ensure smooth installation and serviceability over the life of the product.



VERSATILE



elginwatersolutions.com  
614.524.4588  
watersolutions@elginps.com